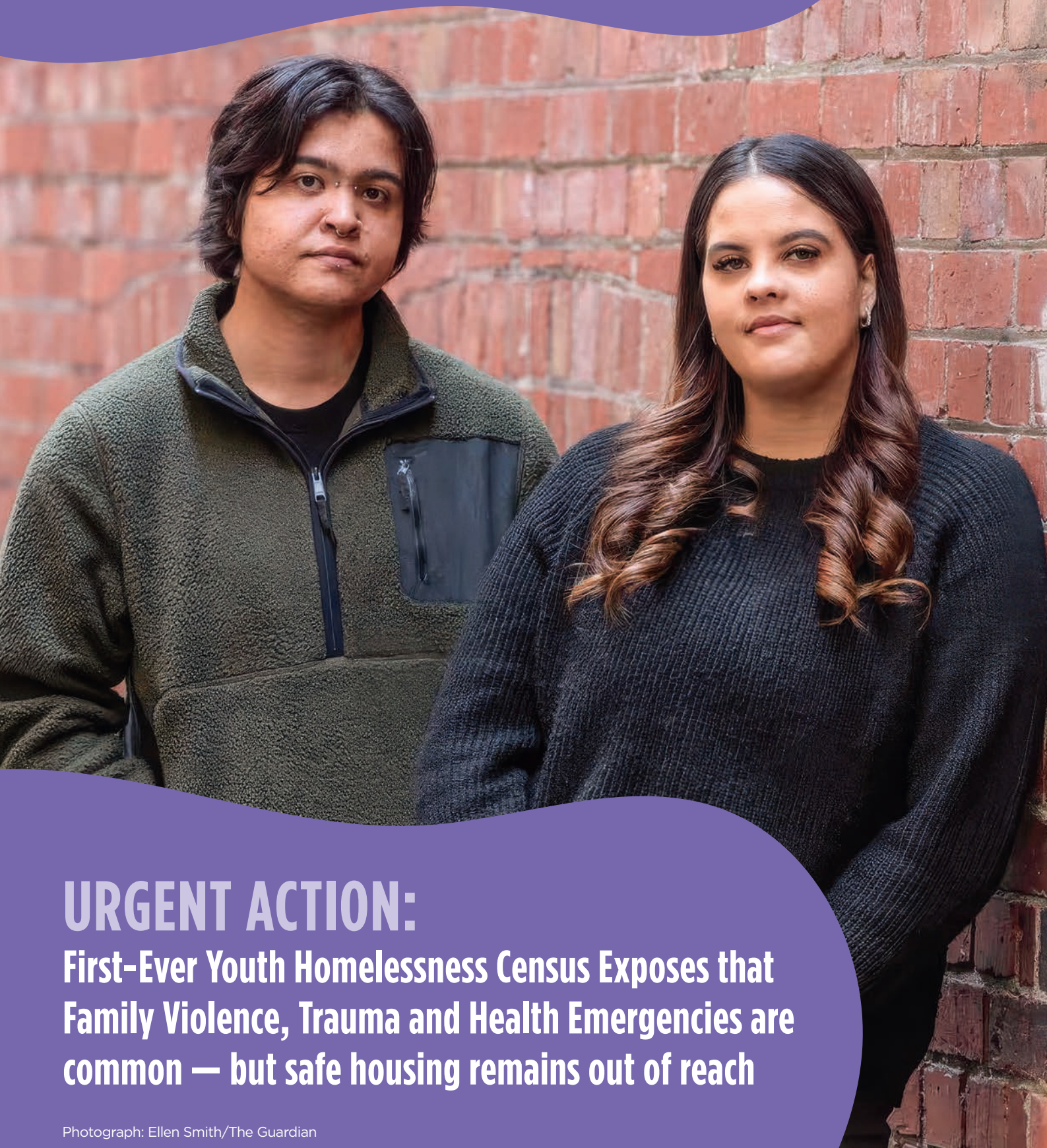


Your **IMPACT**

SPRING 2024

mcm.
melbourne city mission
your future, your way



URGENT ACTION:

First-Ever Youth Homelessness Census Exposes that Family Violence, Trauma and Health Emergencies are common — but safe housing remains out of reach

Photograph: Ellen Smith/The Guardian

A Message From Our CEO

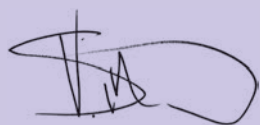
Last month during Homelessness Week, I joined our Advocacy team at Victoria's Parliament House to launch the Youth Homelessness Snapshot. As the State's largest youth homelessness service provider, MCM is leading the charge for a dedicated housing strategy for young people.

Our presence at Parliament during Homelessness Week was not just a data presentation but a powerful call to action. We were heartened when Housing Minister, Harriet Shing MP, echoed our urgent plea for the construction of 15,000 new social housing properties for homeless youth.

This issue of *Your Impact* highlights some of the work towards addressing youth homelessness as well as other projects made possible thanks to supporters like you.

Thank you - you make a difference.

Warm regards,



Vicki Sutton
CEO, MCM



MCM's Victorian Youth Homelessness Snapshot 2024



MCM's Snapshot Unveils Alarming Statistics.

MCM's inaugural Victorian Youth Homelessness Snapshot, depicting the stark reality faced by young people accessing MCM's homelessness programs on a given day in 2024, underscores the urgent need for action.

The census data collected supports the research conclusions:

Family violence leads to homelessness for young people.

- **4 in 5** young people experienced family violence before losing their homes

Homelessness erodes mental health, increasing the risk of self-harm and suicide.

- **1 in 2** reported self-harm, suicide ideation, or suicide attempts
- **1 in 2** were admitted to the hospital for mental health concerns

Homelessness persists with no access to secure, supported, and affordable housing.

- **2 in 3** have been homeless for more than two years, and 1 in 3 for over five years.

These statistics reflect years of a young person's life spent in fear and instability, underscoring the urgent need for secure, supported, and affordable housing to break this devastating cycle.

Download the Snapshot from
mcm.org.au/our-publications



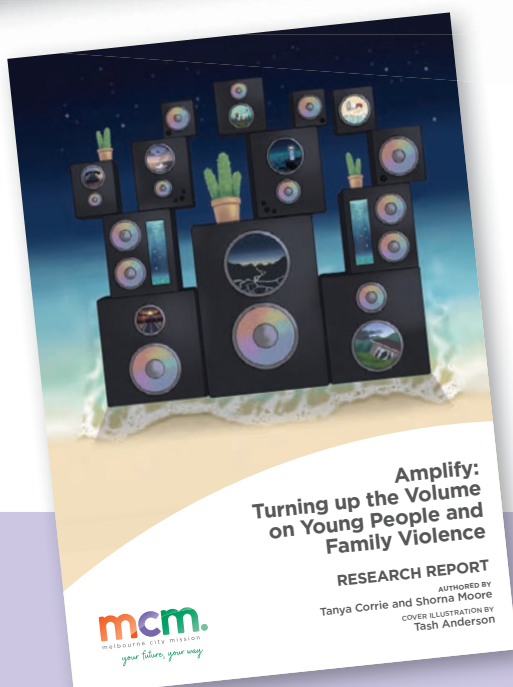
Actions
speak
louder
than words

MCM is taking decisive action in response to the concerning findings from the *Amplify: Turning up the Volume on Young People and Family Violence* report, echoed in the Youth Homelessness Snapshot.

The Amplify project takes a youth-centred, family violence-aware approach, offering hands-on support through case management, counselling, safety planning, and advocacy. We know the urgent need for better support for young people escaping family violence.

The report also revealed that the 'Escaping Violence Payment' doesn't apply to those under 18; therefore, many young people fleeing violence are without any income support.

Conducted within MCM's Frontyard Youth Services, the Amplify project fills this gap by providing a tailored response to the challenges faced by young victims. You can support in helping these vulnerable young people immediately by donating to the Amplify project today.



Older adolescents escaping violence without a protective parent continue to fall through the cracks of the family violence system.

Removing Barriers, Unlocking Potential

Hester Hornbrook Academy is committed to the Four E's: Engage, Equip, Empower, and Extend. Our EmpowerED fund reflects the 'Empower' principle, aimed at removing financial barriers to ensure every student can focus on their education.

- **Engage:** Tailor the curriculum to each student's unique talents and passions, supporting them from their individual starting point to reach their full potential.
- **Equip:** Provide a safe, valued, and inclusive community, encouraging students to fully participate in both their immediate and wider communities.
- **Empower:** Offer holistic support addressing physical, social, and mental wellbeing to enhance students' success.
- **Extend:** Foster resilience and character development to help students navigate life's challenges successfully.

The EmpowerED Fund covers essential expenses such as travel, childcare, connectivity, and educational materials,

ensuring students can fully engage in their studies without financial distractions. Your support will make a profound difference in their academic and personal lives.

Join us in making a difference and empowering young minds to reach their full potential.

**Donate to the EmpowerED fund
please scan the QR code or go
to mcm.org.au/empowered**



Jennifer's Journey



Jen with Karin and Mary

Jennifer's journey at Hester Hornbrook Academy is one of resilience.

As a young mother, Jennifer found a supportive community in the Parent-Friendly classroom, enabling her to continue her education while caring for her daughter.

With encouragement from dedicated staff, Jennifer rediscovered her love for learning and earned her Certificate II in Hospitality. Now, thanks to the Alumni program and a scholarship, she's pursuing a Cert III in Health Services Assistance at Victoria University. Jennifer is grateful to everyone who helped her build a brighter future.

Support students like Jennifer by donating to Hester Hornbrook Academy today.

The power to end youth homelessness

On Thursday, 16th May, over a thousand compassionate Victorians gathered for MCM's Sleep At The 'G to support the thousands of young people in Victoria without a safe place to call home. This one-night sleepover at the iconic MCG raised an impressive \$816,626 to create safe, supportive homes for young people experiencing homelessness.

The event offered something for everyone — music, comedy, magic, fashion, and games. But it was the panel of young people with lived experience who bravely shared their stories that truly united us and reminded us why we were there.

Over 7,600 young people aged 12-24 are experiencing homelessness in Victoria on any given night. They don't choose this path; many are fleeing family violence, abuse, neglect, mental illness, or other hardships.

Thank you to every sleeper and supporter for making a difference and creating a night to remember!



Top Community Team Fundraiser

Team Freemasons, the top community fundraising team at this year's SATG, raised \$109,267.

Their sea of yellow fluoro beanies lit up the night as they brought energy, joy, and laughter to everyone they connected with. A huge thank you to Team Freemasons 24—we can't wait to see you back in 2025!



Register your interest for MCM Sleep At The 'G 2025, please visit SleepAtTheG.com.au

Our Top Fundraiser!

Nicole Brittain was the highest individual fundraiser for the 2024 Melbourne City Mission's Sleep at the 'G event, raising an impressive \$20,415.

This was Nicole's 2nd year participating and she was joined by Steven Gandel, which was his first time.

Nicole, Grant Manager at the Gandel Foundation explained, "This is a cause close to my heart, not for personal reasons, but because I think it's a major issue in Australia. It's my little contribution that I like to make once a year."

Thanks Nicole – we think your 'little contribution' was a huge achievement!





Homes First.

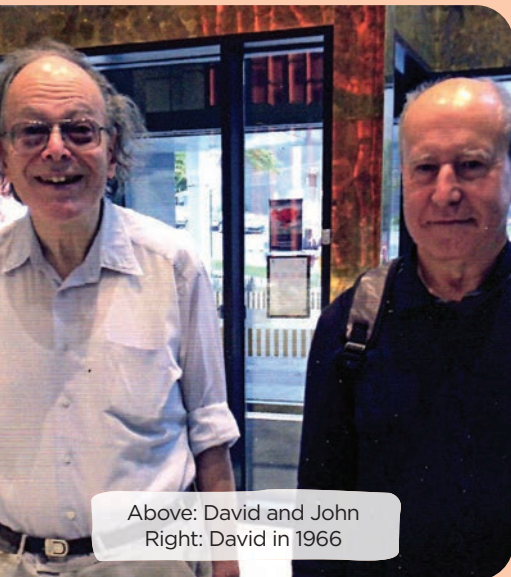
MCM is delivering a new initiative in Melbourne's north, west, and eastern suburbs called Homes First. This program emphasises long-term solutions through social and affordable housing.

Adults, families and young people are matched with teams that address not only housing but also mental health, substance abuse, and family violence.

This holistic approach aims to break the cycle of homelessness.

MCM's Youth Early Intervention and Homelessness Manager, Lisa O'Brien, notes that "The No.1 reason why people come into the system, unfortunately, is family violence."

This program offers a chance to change lives by combining safe housing with essential support.



Above: David and John
Right: David in 1966



Family Trust

When David passed away in early 2022, he entrusted his cousin John to distribute his estate to meaningful causes. Knowing David's values, John chose to support MCM, especially our work with young people in crisis.

David had faced his own challenges and knew the importance of having someone to rely on. It says a lot about John's character that David entrusted him with this responsibility, confident he would honour his legacy with care.

If David's story inspires you to leave a gift in your will, please contact our donation team at **1300 364 507** or email **donation@mcm.org.au**



Steve (Detour) and Sammy J

Detour offers intensive support and resources to young people aged 12 to 24 who are at risk of or recently experienced homelessness. The focus is on strengthening family and social networks, stabilising housing, and exploring new housing options to help them develop skills and achieve their goals.

A Night Cabaret with Sammy J

In August, the Frankston community gathered to share a night of laughter to raise funds for MCM's Detour program. Held at the Frankston Arts Centre and featuring the comedic talents of ABC radio host Sammy J, this night was organised by volunteer Jane McMillan.

Guests enjoyed cabaret-style entertainment, a raffle, and a silent auction, all supported by the Frankston business community. Thank you to Jane for her continued commitment to helping local youth at risk of homelessness. Your dedication made the evening a heartfelt success.

25 Years of Compassion: MCM volunteer honoured for dedication to Palliative Care

Since the late 1990's, Jean Bohmer has volunteered with MCM's Palliative Care supporting carers with home and hospital visits.

As part of the MCM team, Jean finds profound meaning and purpose in being trusted with compelling end-of-life stories. Jean was honoured earlier this year with the 2023 Victorian Volunteering Impact Award. This award highlights her extraordinary dedication and the crucial role of volunteers in supporting those facing end-of-life challenges. If you're interested in volunteering visit mcm.org.au/services/palliative-care/contact to learn how you can become a vital part of this rewarding work.



Little Stars

The nursery rhyme "Twinkle, Twinkle, Little Star" has soothed children for generations. Similarly, MCM's Parent-Child Mother Goose program, is especially valuable for parents and carers needing extra support due to their children's special needs. It nurtures connections between parents and children through rhymes, songs, and stories.

Offered through our Early Childhood Intervention Services (ECIS), this program strengthens the vital bonds essential for early development. By fostering communication and social skills, it helps both parents and children "shine brightly." Your generous donation ensures we can continue offering this enriching program to families who need it most.



MCM's Early Childhood Intervention Service supports young children with developmental delays or disabilities. Through play-based learning, therapy, and family guidance, the program helps children build important skills, from communication to social interaction. By working closely with families, MCM ensures each child gets the support they need to thrive and reach their full potential.



Building a Future Together: The Impact of Regular Giving

Tony and Fiona have been dedicated supporters of MCM for nearly three decades. When asked about their motivation, they expressed gratitude for their own upbringing and a belief that *“When we help young people build a future – we all benefit”*.

Recently, Tony and Fiona visited MCM’s Hester Hornbrook Academy and were deeply moved by their experience. After visiting our South Melbourne campus and hearing firsthand from staff and students about the difference Hester makes in their lives, their commitment to creating meaningful change was reinforced.

Thank you to all our regular giving donors for your ongoing support. If you would like to become a regular giver like Tony and Fiona, please contact us at 1300 364 507 or email donation@mcm.org.au.

Thank you

Thank you to all who supported our 2024 Winter Appeal.

Your generosity is helping young people like Ryan find safety and support. With the guidance of his dedicated case worker, Ryan is rebuilding his life and finding hope for the future. Your support is not only changing lives but also helping ensure every young person can thrive. Thank you for your compassion and generosity.



Thank you for keeping our communities strong, and helping Victorians when they need it most.



To donate online, visit mcm.org.au/makeanimpact or scan here:



To make a donation over the phone, call **1300 364 507**



PO Box 509, Melbourne, VIC 3205
Phone: 1300 364 507

mcm.org.au

ABN: 56 161 846 149

MCM places people at the centre of what we do



We acknowledge the Traditional Owners of the waterways and lands where we work. We pay our respects to Elders past and present.



We commit to ensuring everyone we work with is safe, empowered, supported, and respected, especially children and young people. We support and celebrate diversity of race, culture, ability, gender, sexuality, and gender identity.